

Sandy Creek Transit Center

April 2016



George Mason University

Overview

- The existing Sandy Creek Shuttle stop adjacent to Parking Services will be reconfigured and expanded to create the new Sandy Creek Transit Center
- The new transit center will provide for expanded bus service to a centralized location at the Fairfax Campus, allowing riders to potentially choose from CUE, Mason Shuttles, Fairfax Connector, and Metrobus services at the same location
- Project will support and increase ridership by improving the quality of the existing transit services as well as to create new ones

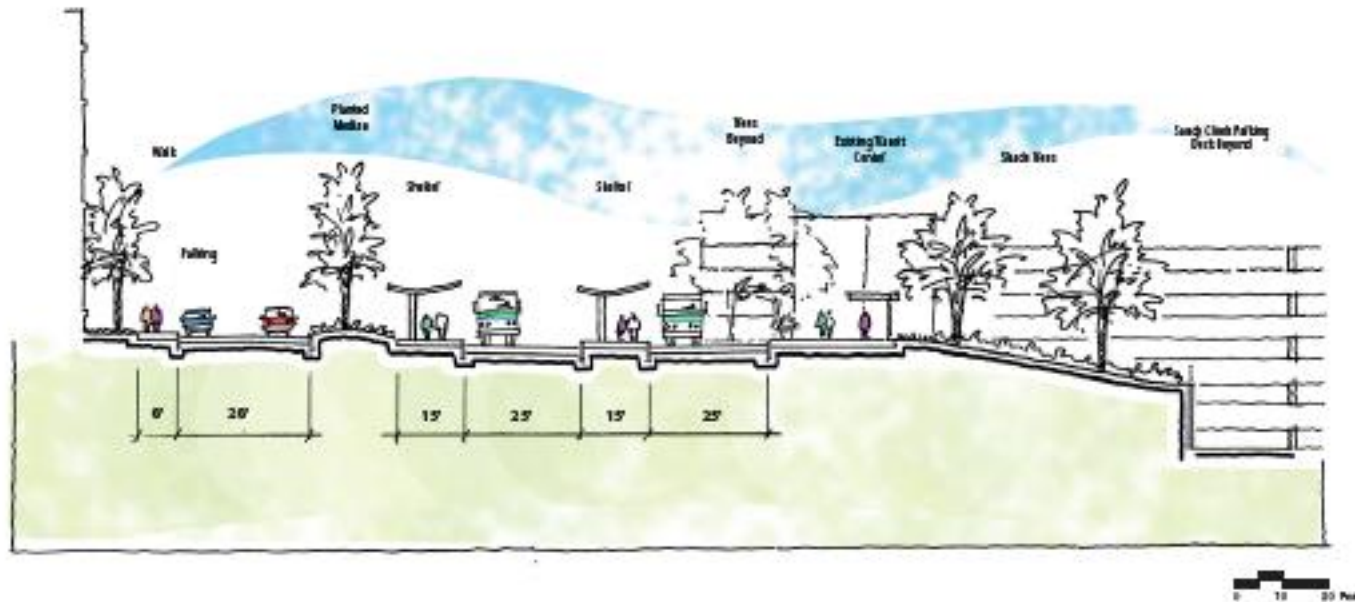
Project Inception

- In 2007, Fairfax County passed a bond measure appropriating \$1 Million for both George Mason University and NVCC to each build a transit center.
- Mason then worked with Fairfax County to create the specific characteristics and facilities needed for a transit center
- The concept and location of the transit center was subsequently developed as part of the 2009-2011 Transportation Master Plan
- The final agreement for the Transit Center was executed in June of 2015 by Fairfax County and Mason

Original Transit Center Concept



Transit Center Concept



Section A

Sandy Creek Transit Stop

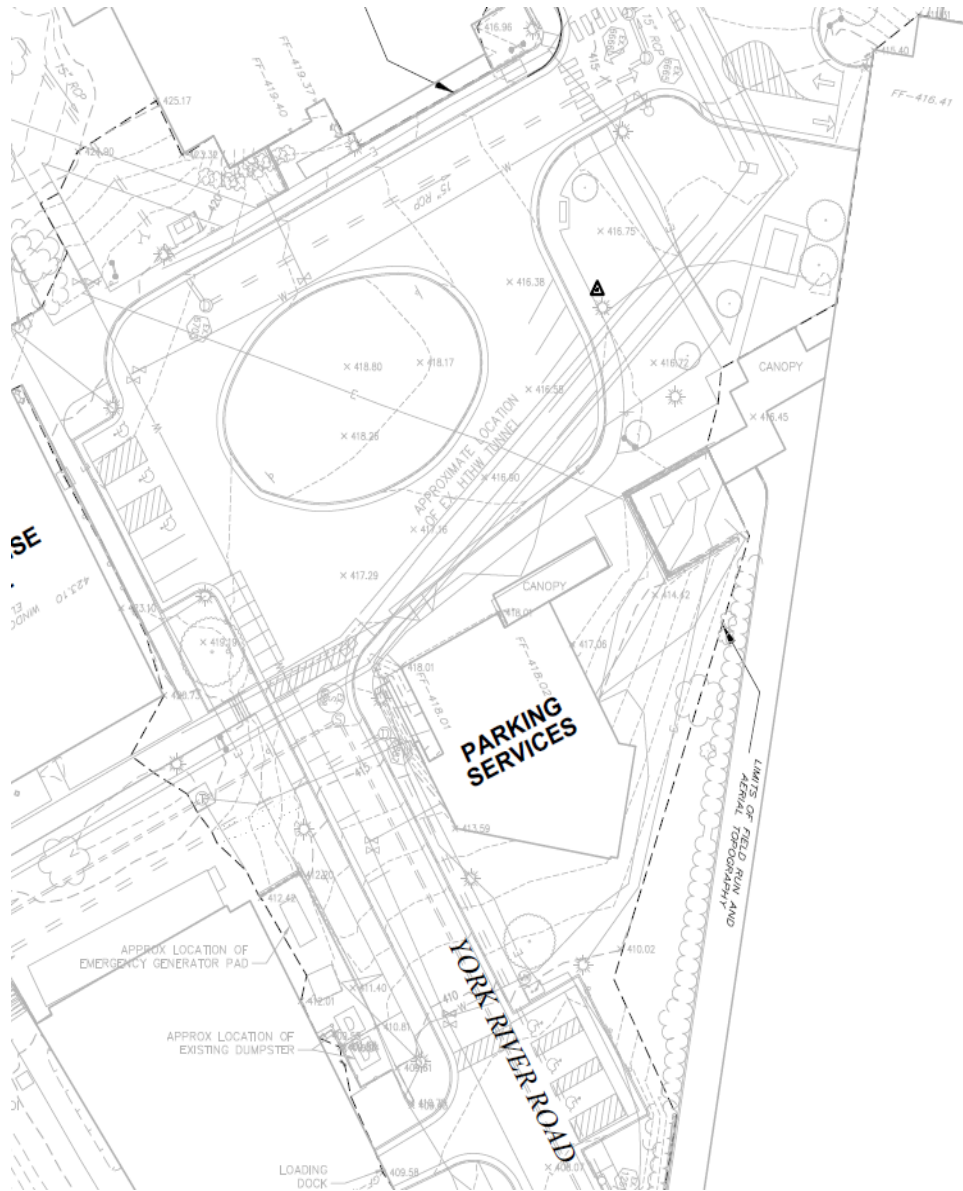
Improvements

- Bus Service
 - The new transit center will have 6 bus bays to allow 6 buses to serve the area at once. Currently, the Sandy Creek Shuttle stop can only accommodate 2 buses
 - Will be able to accommodate WMATA, CUE, Fairfax Connector in the future, along with existing Mason Shuttles buses
 - A bus lay over area will be added at the end of York River Road
 - Two new bus shelters will be added

Improvements Continued

- Bike Traffic
 - A bike lane will be added along Sandy Creek Way and York River Road. Currently, neither road has a bike lane
- Pedestrian Traffic
 - The sidewalk along York River Road will be widened and existing offsets eliminated to better serve the natural flow of pedestrians
 - Multiple crosswalks will be added to allow access to the bus bays from the sidewalks along Enterprise Hall, Exploratory Hall, Parking Services, and the Shenandoah Parking Deck

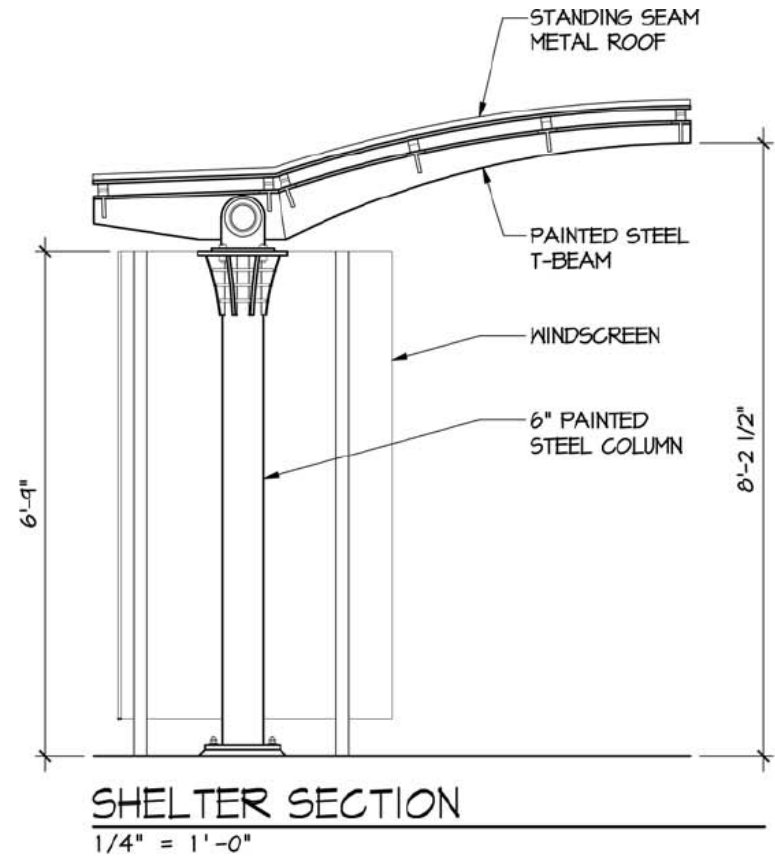
Existing Shuttle Stop Configuration



New Shuttle Stop Configuration



New Bus Shelter Concept



Changes to the Flow of Traffic

- Currently, there is two way traffic on Sandy Creek Way and drivers can “turn around” at the circle. Traffic does not become one way on York River Road until after the circle
- Sandy Creek Way will become one way past the second level to the Shenandoah Parking Deck. Under the new design, the only two way traffic will be between Patriot Circle and the Shenandoah Parking Deck Second Level entrance
- Only buses will be permitted in the bus bay areas. All other traffic will use the “through lane” along Sandy Creek adjacent to the bus bay areas.

Changes to the Shenandoah Parking Deck Access

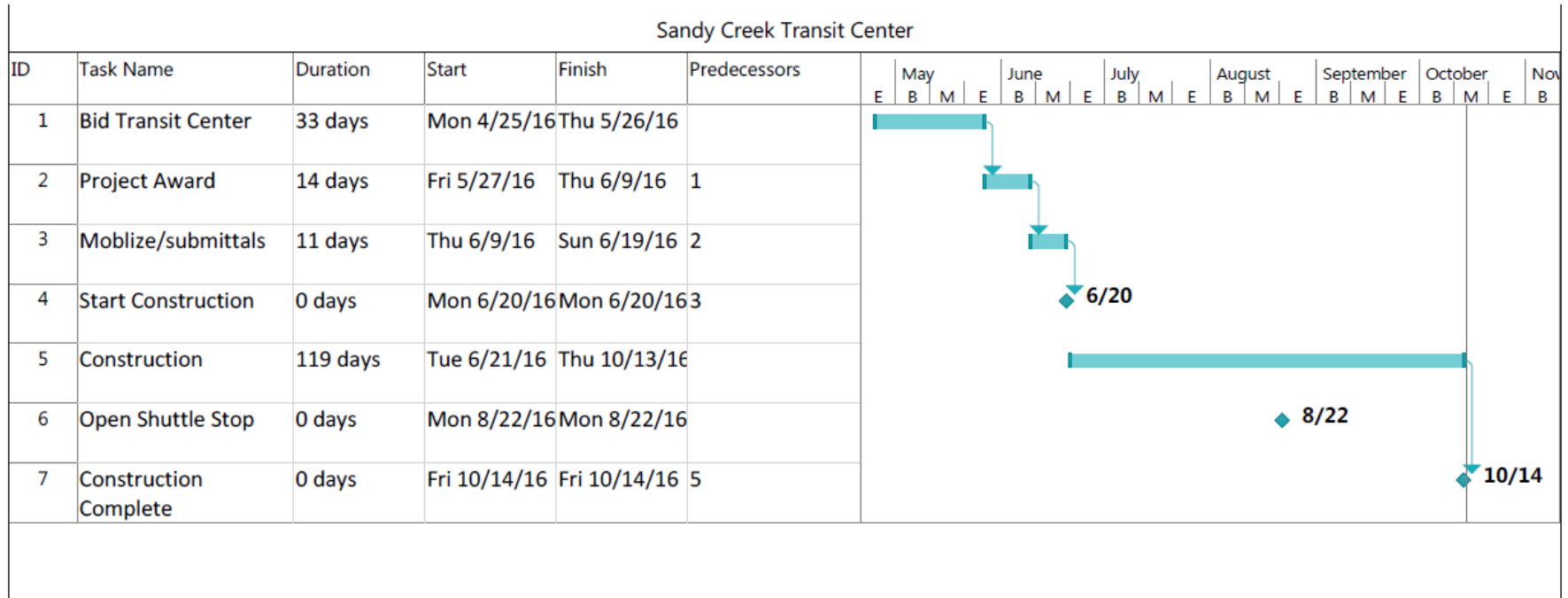
- The third level permit exit will be closed under normal parking operations
- The visitor exit lane on level 1 will become a permit access exit
- The ramp from level 1 to level 2 is being converted from visitor parking to permit parking
- Sandy Creek Way will be widened between the first and second level garage entrance to improve vehicle access in and out of the garage.

Changes to On-Street Parking

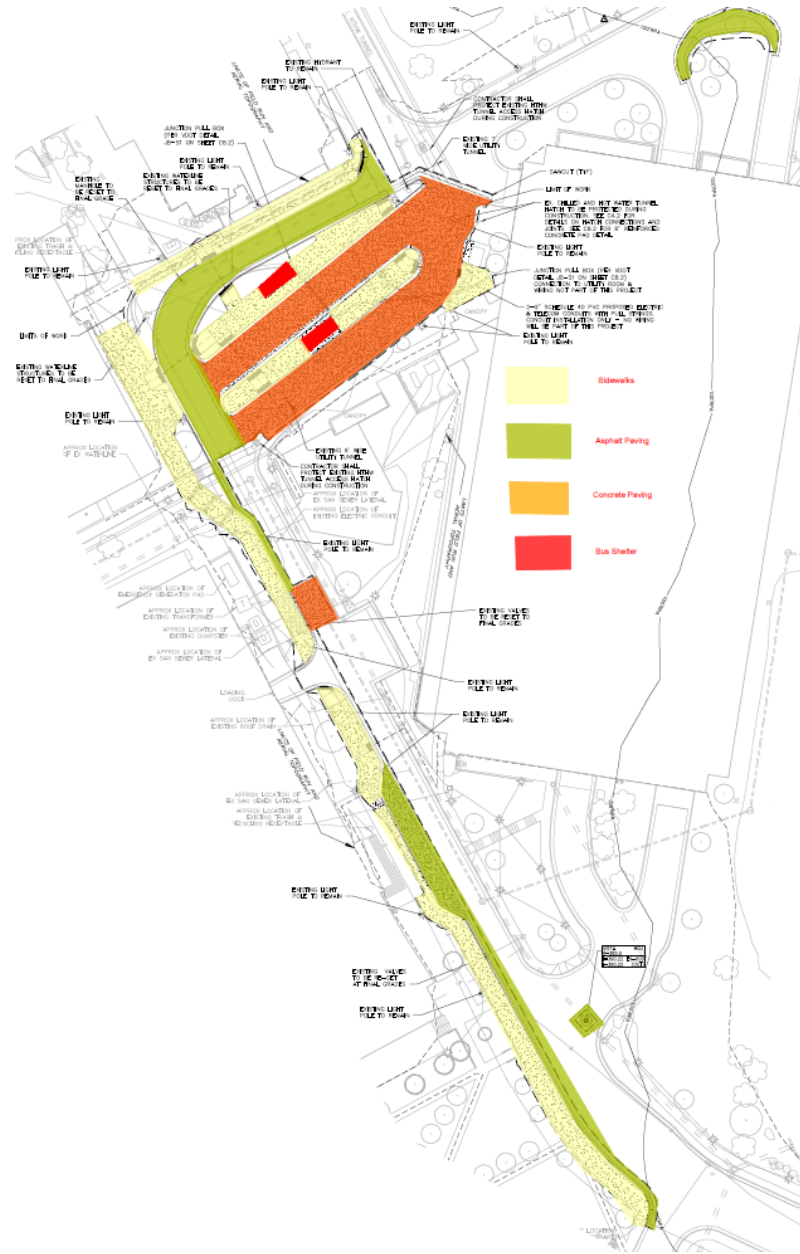
- There will no longer be any on-street parking along Sandy Creek Way and York River Road
- The disabled parking spaces currently in front of Enterprise Hall will be relocated inside the Shenandoah Parking Deck
- The motorcycle spots will be closed. There is motorcycle parking available on the third level of the Shenandoah Parking Deck, but will require a deck motorcycle permit
- The short term parking in front of Parking Services will be closed. There is complimentary 30 minute parking in the Visitor Area (Level 1) of the Shenandoah Parking Deck

Construction Schedule

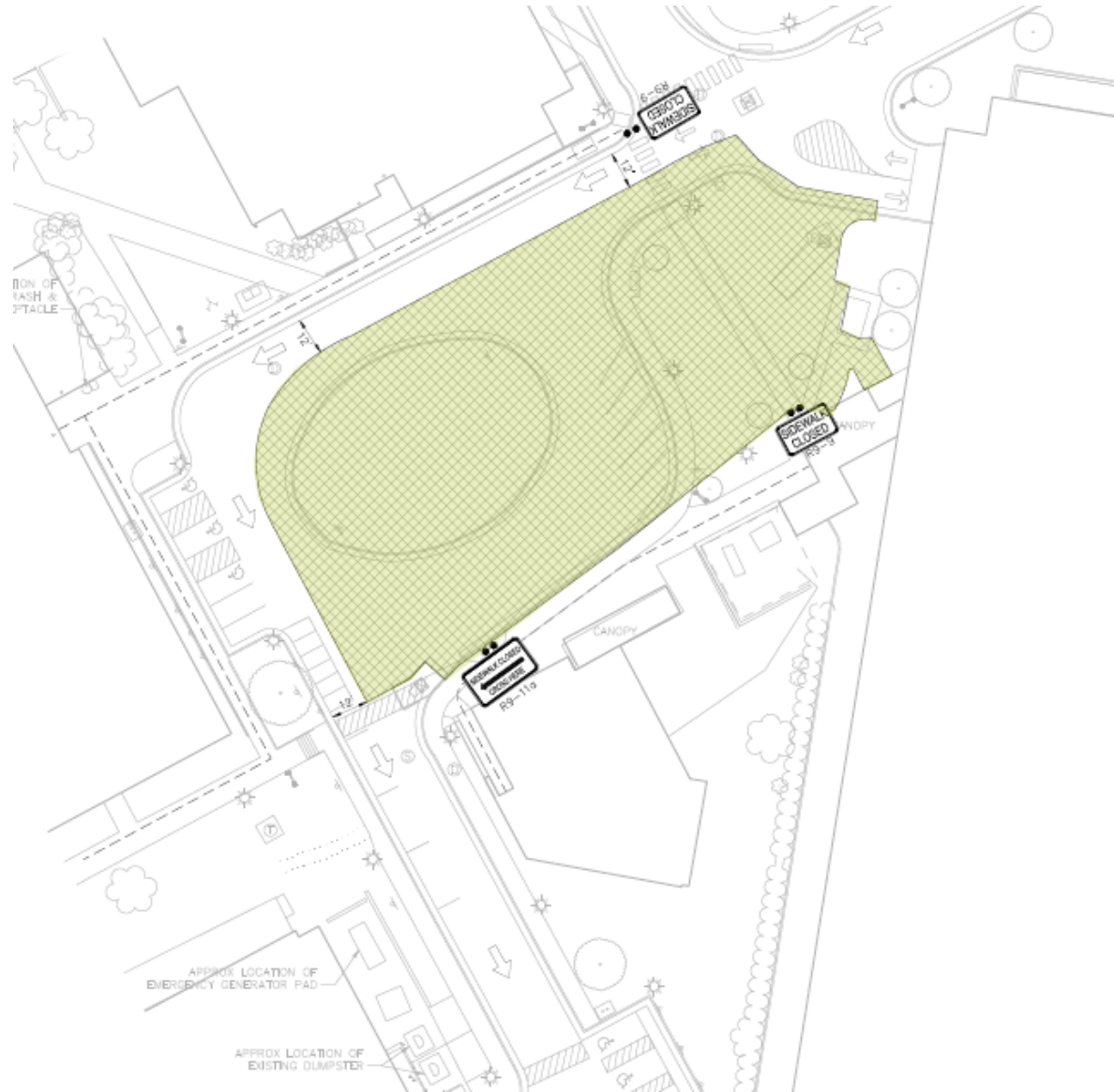
- Construction will begin at the end of June.
- Project will be complete in the fall of 2016



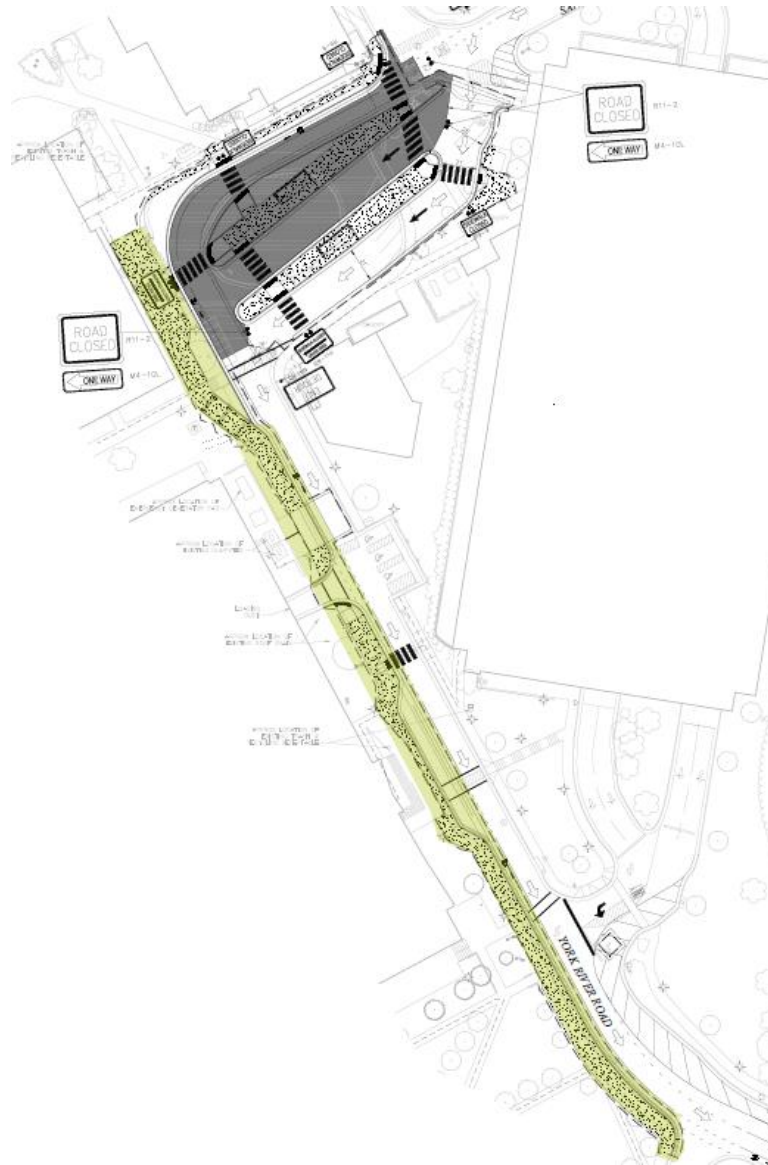
Construction Plan



Phase 1 of Construction



Phase 3 of Construction



Impacts During Construction

- The Sandy Creek shuttle stop will be closed at the start of Construction, 6/22/16. It will re-open 8/22/16, though construction will continue through the fall
- There will be limited golf cart services using the Patriot Lift program to help disabled students and employees get to other shuttle stops
- Sidewalks will be closed and pedestrian traffic re-routed during in various locations during the course of construction

Questions & Answers

