



Safe Streets for All

Active Transportation Webinar Series

JULY 29, 2020

MODERATOR: KATY LANG, ACTIVE TRANSPORTATION, ARLINGTON COUNTY COMMUTER SERVICES

PANELISTS: DAN NABORS, ARLINGTON DES AND GILLIAN BURGESS, CHAIR OF ARLINGTON BICYCLE ADVISORY COMMITTEE

Agenda

- ❑ Housekeeping and Introductions
- ❑ Panelist Presentations
 - ❑ Dan Nabors
 - ❑ Gillian Burgess
- ❑ Audience Q&A
- ❑ Closing Remarks

Housekeeping

- ❑ Please enter questions into the Q&A box, select “To All Panelists”
- ❑ Today’s presentation will be available on the George Mason transportation site at <http://transportation.gmu.edu>
- ❑ Tweet along with the Coalition for Smarter Growth:
 - ❑ *@BetterDCRegion #ActiveNova*
- ❑ Call in Info: 415-655-0003
 - ❑ Access code: 610 806 615#

Today's Panelists



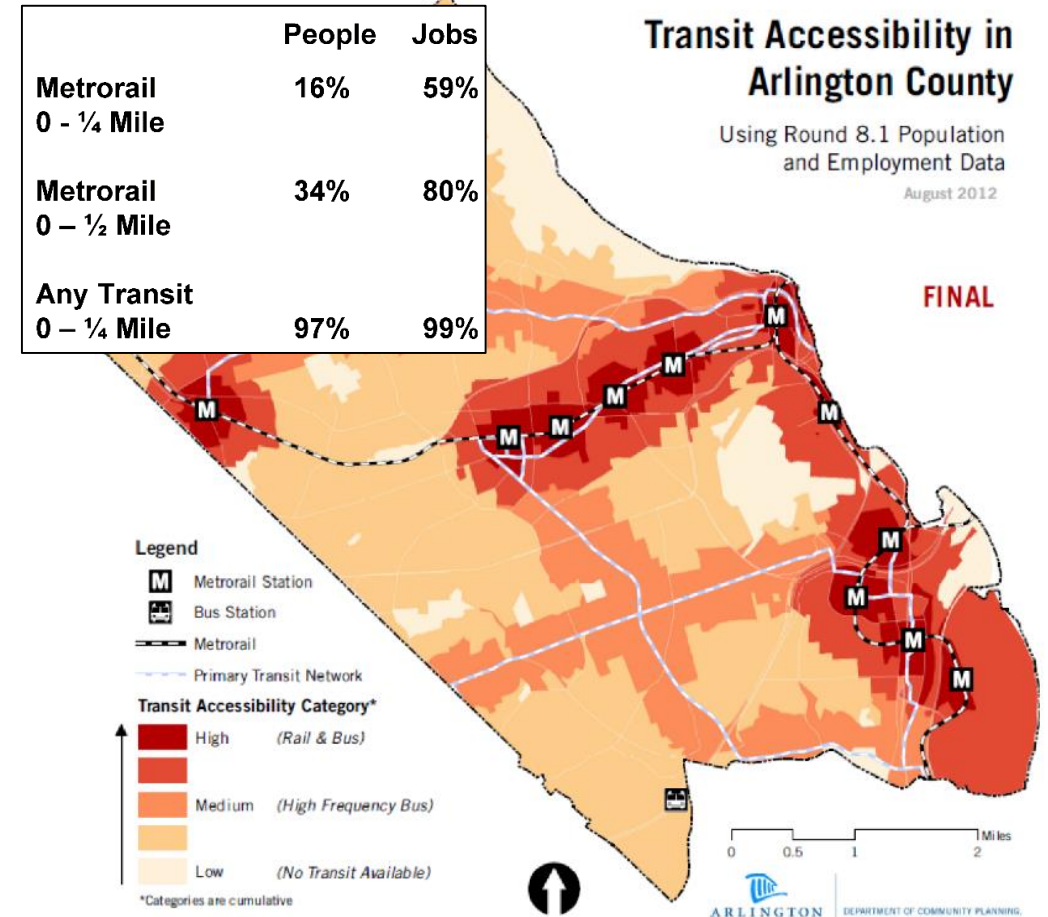
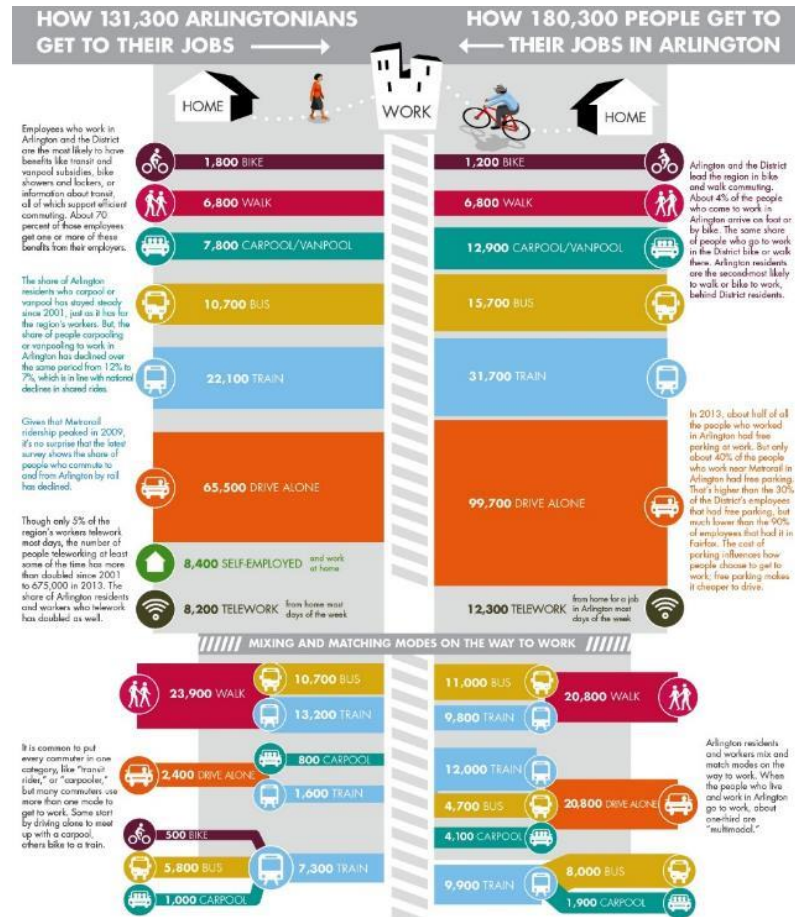
Dan Nabors

Design Team Supervisor,
Arlington County Department of
Environmental Services

Gillian Burgess

Arlington's Bicycle Advisory
Committee Chair

Before we start...



Poll 1 (Multiple Selection)

Thinking about this year, what infrastructure have you used?

- Protected bike lane
- Unprotected (regular) bike lane
- Trail
- Rectangular Rapid Flash Beacon (RRFB)
- Sidewalk that felt too narrow

Planning for All

Bicycle Element of the Master Transportation Plan

Trail Modernization Program

Ebikes

Racial Equity

III. Arlington's Vision for Bicycling

Bicycling is an integral part of Arlington's equitable, multi-modal transportation system and provides safe, reliable, convenient and comfortable travel for persons of all ages and abilities.

Designing for All



The diagram consists of two identical, side-by-side graphic elements. Each element is composed of a solid orange rounded rectangle with a smaller, light orange rounded rectangle centered inside it. The light orange rectangle has a thin orange border. The text is centered within the light orange rectangle.

Design
implementation that
works for everyone

Iterative
improvements
through infrastructure
to achieve active
transportation goals

Case Studies: Veitch St and N Quincy St Protected Bike Lanes

Case Study: Veitch Street Protected Bike Lane



BEFORE

Reference: Arlington County



AFTER

Reference: Arlington County

N Veitch St North of Wilson Blvd

Case Study: Veitch Street Protected Bike Lane



Reference: Arlington County

During Peak Hours

Curbside Space used as "Right Turn Pocket"



Reference: Arlington County

During Off-Peak Hours

Curbside Space used as Parking Spaces

N Veitch St Curbside Management

Case Study: Veitch Street Protected Bike Lane



Reference: Arlington County

N Veitch St from Key Blvd to Wilson Blvd



BEFORE

Reference: Google Street



AFTER

Reference: Arlington County

Lee Hwy and N Quincy St Intersection

Case Study: N Quincy Street Protected Bike Lane



Reference: Arlington County

N Quincy St at Mosaic Park

Case Study: N Quincy Street Protected Bike Lane



Reference: Arlington County

N Quincy St at Mosaic Park

Case Study: N Quincy Street Protected Bike Lane



BEFORE

Reference: Arlington County

Pedestrian Crossing Tactical Improvements



AFTER

Reference: Arlington County

Pedestrian Crossing Permanent Improvements

Case Study: RRFBs

A thin vertical line is positioned to the right of the text, extending from the top of the text area to the bottom of the text area.

What are Rectangular Rapid Flashing Beacons (RRFBs)?

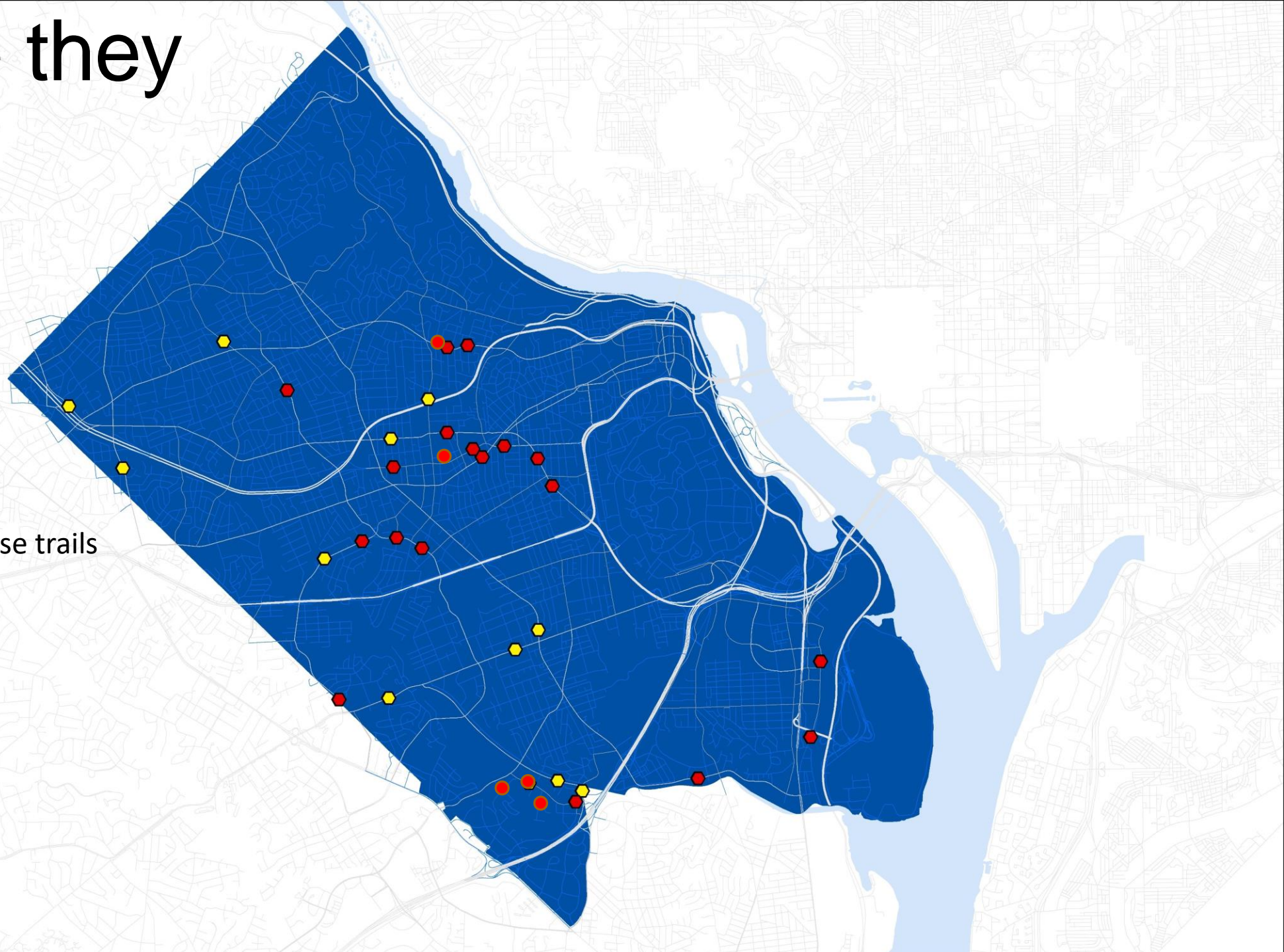


Where are they located?

~~10~~ **18** RRFBs

100 lane-miles of mixed-use trails

1000 lane-miles of urban
county-maintained roadway





Reference: Arlington County

N Quincy and 15th St N RRFB



Reference: Arlington County

S Arlington Mill Drive RRFB



Reference: Arlington County

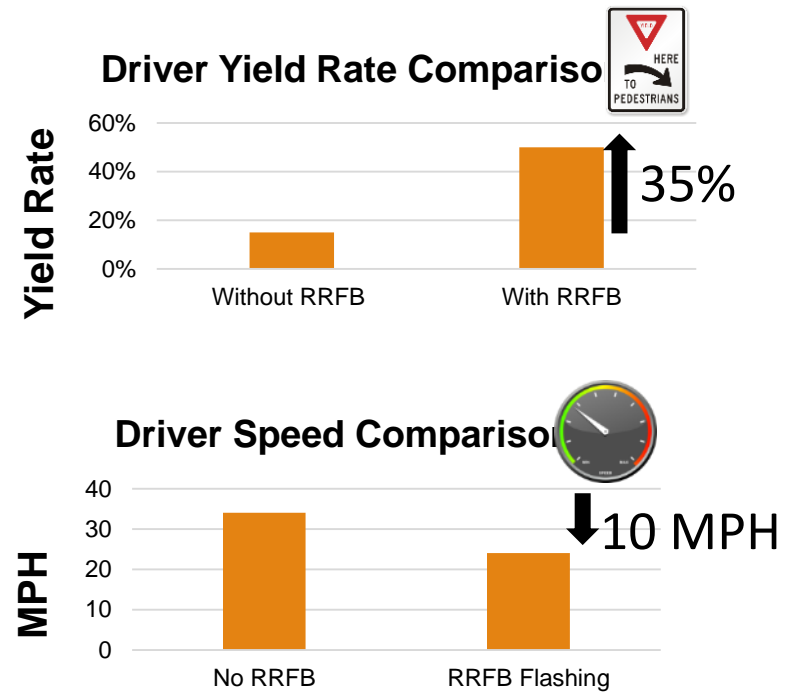
Columbia Pike and S Oakland St

RRFBs

23



Washington Blvd & Utah Street



Poll 2 (Multiple Selection)

Did you ever walk or bike to school?

- Yes, in elementary school
- Yes, in middle school
- Yes, in high school
- No, because I lived too far to walk or bike (5+ miles)
- No, for other reason

What's Next: Schools

Arlington Public Schools – making strides towards improved transportation policies

Staff committee (“Joint Committee on Transportation Choices”) and public committee (“Advisory Committee on Transportation Choices”)

Transportation Demand Management

- Staff: Champions Program through Arlington Transportation Partners
- Students: Safe Routes to School
- COVID: Internal staff working groups on parent drop off and active transportation



What's Next: Vision Zero

Reducing crashes

Reducing risk

Changing the way we think about travel



Audience Q&A

- ❑ We will select questions from the Q&A box
- ❑ When posting a question, please select “To All Panelists”



Active Transportation Webinar Series

□ SPRING 2021: ACTIVE TRANSPORTATION SUMMIT

DETAILS AND RECORDINGS AT
[HTTPS://TRANSPORTATION.GMU.EDU/ARCHIVE/ACTIVE-TRANSPORTATION-WEBINAR-SERIES/](https://TRANSPORTATION.GMU.EDU/ARCHIVE/ACTIVE-TRANSPORTATION-WEBINAR-SERIES/)